



# MEDALLION CENTER

For Lease  
6464 Northwest Highway  
Dallas, Texas 75214

VENTURE

MIKE GEISLER  
MGEISLER@VENTUREDFW.COM

AMANDA T. WELLES  
AWELLES@VENTUREDFW.COM

HANNAH BOSWELL  
HBOSWELL@VENTUREDFW.COM

# Metrics

6464 Northwest Highway  
Dallas, Texas 75214

## Location

6464 Northwest Highway

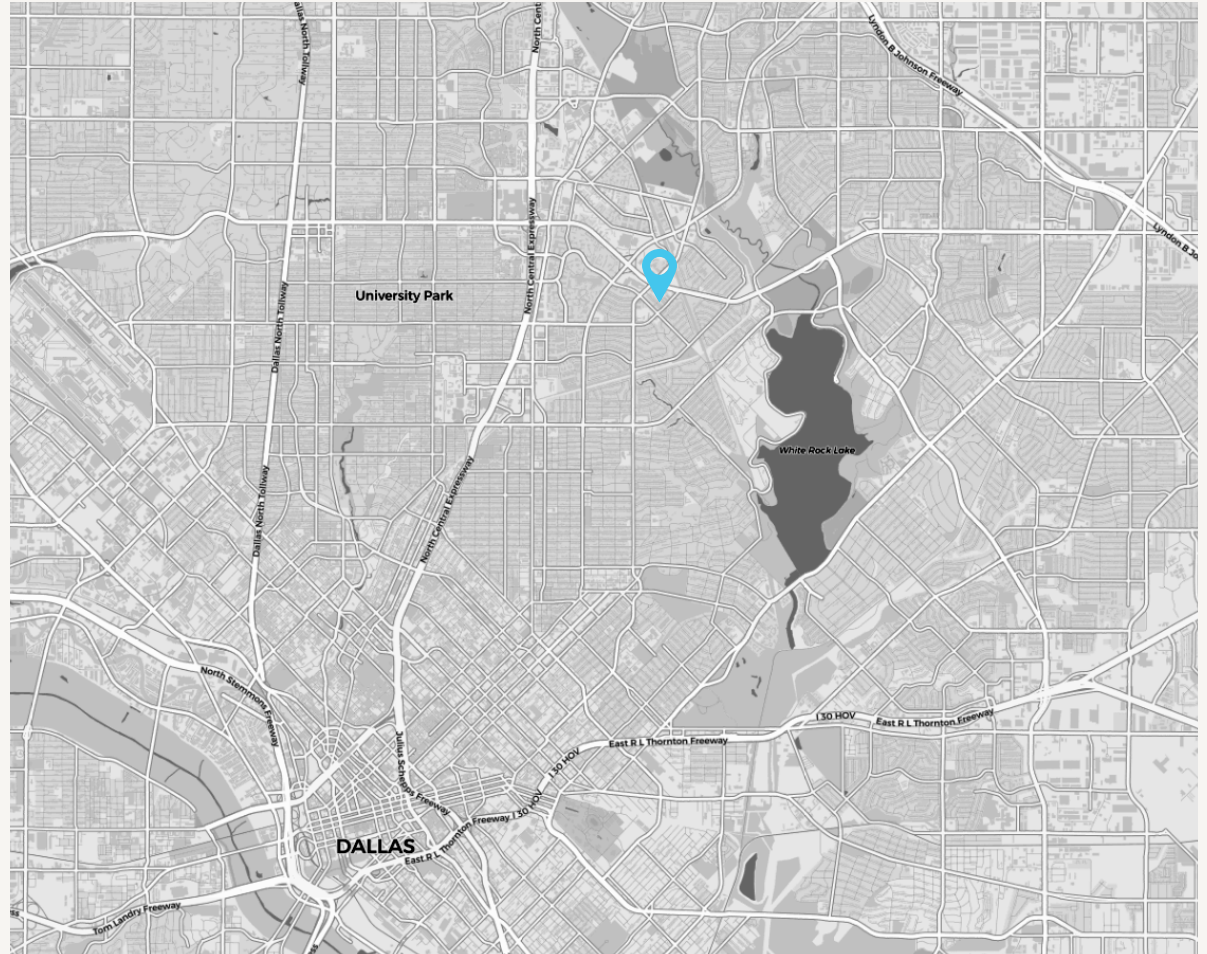
## Available Spaces

Suite 305 11,145 SF  
Suite 335 Coming Soon (Tenant Operating Do Not Disturb) 2,860 SF

Suite 901 & 902  
Pad Site for Ground Lease  
2,500 SF Building

## Traffic Counts

Northwest Hwy	Skillman St
50,024 VPD	25,889 VPD
2022	2022



## Area Attractions



VENTURE

MIKE GEISLER  
MGEISLER@VENTUREDFW.COM

AMANDA T. WELLES  
AWELLES@VENTUREDFW.COM

HANNAH BOSWELL  
HBOSWELL@VENTUREDFW.COM

# Property Highlights

6464 Northwest Highway  
Dallas, Texas 75214

## For Lease

1. Target anchored center
2. Regional shopping center with access to Northwest Highway



## 2025 Demographic Summary

	1 MILE	3 MILES	5 MILES
EST. POPULATION	35,439	164,165	443,880
EST. DAYTIME POPULATION	11,763	76,908	288,860
EST. AVG. HH INCOME	\$98,364	\$187,843	\$168,330

# Site Plan

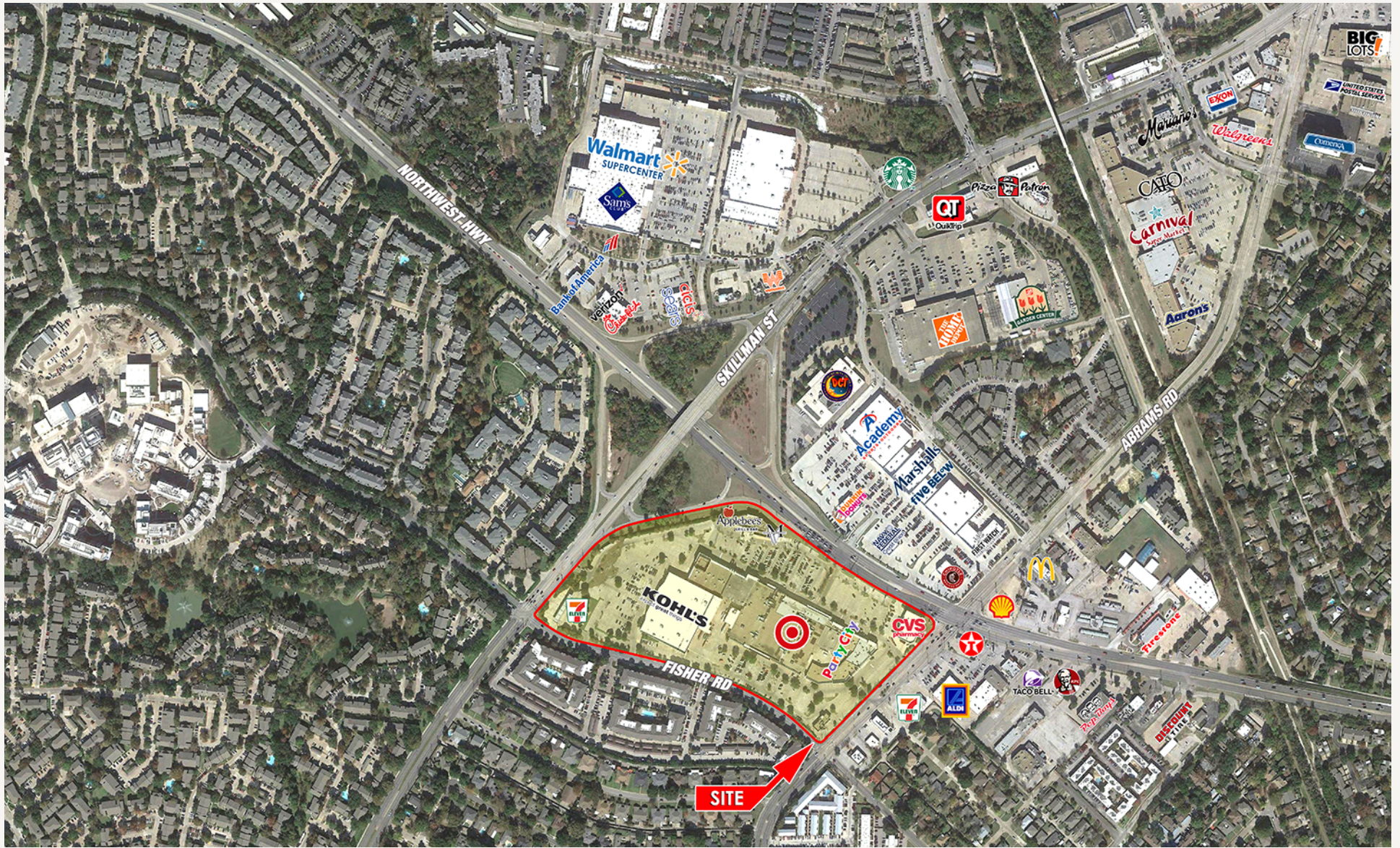
6464 Northwest Highway  
Dallas, Texas 75214



UNIT	TENANT	SQUARE FEET
	<b>BUILDING ONE</b>	
	PLANET FITNESS	25,000
125	KOHL'S	63,925
127	SUMMIT SALON SUITES	8,955
138	DOWN TO PLAY	5,843
144	YARDSTICK	7,510
150	SCRUBS & BEYOND	2,625
160	AT LEASE	1,543
170	PET SUPPLIES PLUS	8,883
200	STORAGE SPACE	1ST FLOOR - 1,971 2ND FLOOR - 1,145
	<b>BUILDING TWO</b>	
212	TARGET	120,000
	<b>BUILDING THREE</b>	
305	VACANT	11,145
309	AMERICA'S BEST CONTACT & EYEGLASSES	5,774
312	BLISS NAIL SALON	3,075
314	SUPERCUTS	1,070
316	CHATIME	1,706
318	SALATA	2,288
322	SUBWAY	1,463
324	SMILEY DENTAL	2,948
326	UNREFINED BAKERY	2,229
330	TAEKWONDO	2,073
331	DR. KOBDISH, JR.	1,063
335	COMING AVAILABLE SOON (TENANT OPERATING DO NOT DISTURB)	2,860
339	INGRAM'S DONUTS	1,050
341	MEDALLION BARBERS	1,050
343	SKIN EXPERTS	1,345
345	MILAN LASER	1,834
347	RDA PROMART	1,392
349	THE SKIN & BODY CO.	1,390
	<b>BUILDING FOUR</b>	
400	CVS	12,900
	<b>BUILDING FIVE</b>	
510	APPLEBEE'S	6,700
514	MATTRESS FIRM	5,543
	<b>BUILDING SIX</b>	
	901 & 902 PAD SITE FOR GROUND LEASE	2,800 SF BUILDING
	<b>BUILDING SEVEN</b>	
701	7 ELEVEN	2,997

# Close Aerial

6464 Northwest Highway  
Dallas, Texas 75214



6464

NORTHWEST HWY

DALLAS, TEXAS

75214

**Mike Geisler**  
**Founding Principal | Managing Partner**  
mgeisler@venturedfw.com

**Amanda T. Welles**  
**Partner**  
awelles@venturedfw.com

**Hannah Boswell**  
**Associate**  
hboswell@venturedfw.com

(214) 378-1212

[www.VentureDFW.com](http://www.VentureDFW.com)

8235 Douglas Ave  
Suite 720  
Dallas, Texas 75225

# VENTURE

\*The information contained herein was obtained from sources deemed reliable; however, Venture Commercial Real Estate, LLC, makes no guarantees, warranties or representations as to the completeness or accuracy thereof. The presentation of this property is subject to errors; omissions; change of price, prior to sale or lease; or withdrawal without notice.





